

Rab3D

Catalog Number: 21044

Gene Symbol: RAB3D

Description: Anti-Rab3D Rabbit Polyclonal Antibody

Background: Rab3D is a small GTP-binding protein that associates with secretory granules of endocrine and exocrine cells. Rab3D is involved in the biogenesis of secretory granules and also associates with early Golgi compartments.

Immunogen: A synthetic peptide from the C-terminal region of human Rab3D

Tested Applications: ELISA, WB, IHC

Recommended Dilutions:

ELISA 1:100-1:5000

WB 1:100-1:2000

IHC 1:100-1:1000

Concentration: 0.2 mg/ml

Host: Rabbit

Clonality: Polyclonal

Purity: Purified from serum

Format: Liquid

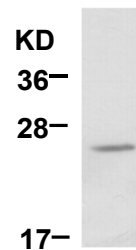
Preservative: No

Constituents: PBS (without Mg^{2+} and Ca^{2+}), pH7.4, 150 mM NaCl, 50% glycerol

Species Reactivity: Rab3D antibody recognizes Rab3D from vertebrates.

Storage Conditions: Store at $-20^{\circ}C$. Avoid freeze / thaw cycles

Western blot:



WB: anti-Rab3D pAb

EC-1 cell lysate was used for Western blot with anti-Rab3D polyclonal antibody (Cat. # 21044).

FOR RESEARCH USE ONLY. NOT FOR DIAGNOSTIC APPLICATIONS